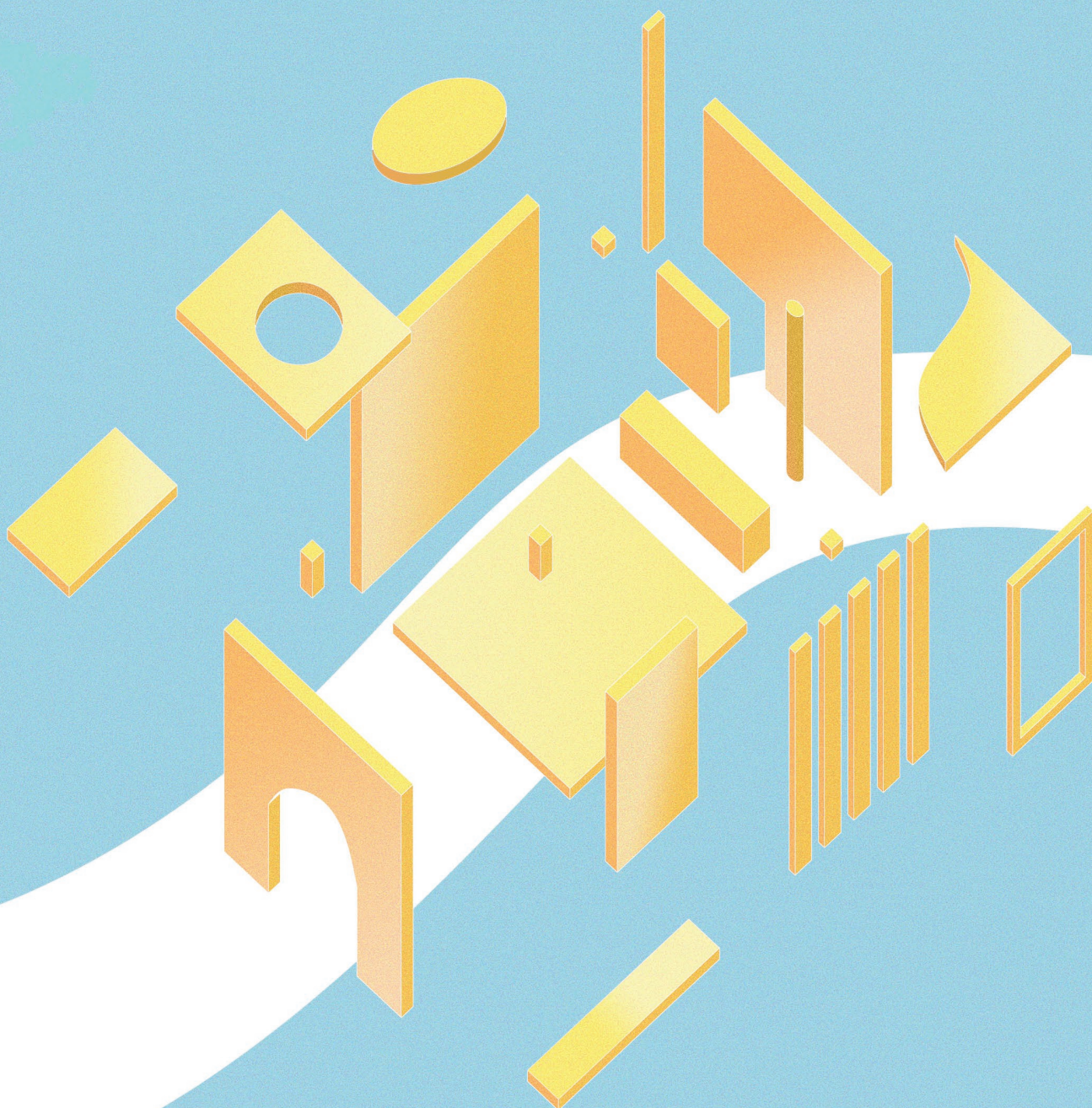


**ARCH
SHARING**
STUDENT COMPETITIONS

EMERGENCY HOUSING IN PARAGUAY

INTERNATIONAL ARCHITECTURE STUDENT COMPETITION

BRIEF - EXPECTATION - REGLEMENTATION





© YLUUX

INTRODUCTION

Paraguay is a country located in the heart of South America, surrounded by three countries: Argentina to the South West, Bolivia to the North and Brazil towards the East. Its territory is subdivided into 17 departments. Its capital city is Asunción. It is the fifth smallest and fourth least populous country in South America, with a total population of 8 million.

About 95% of Paraguayans are of mixed ancestry (Spanish and indigenous) and the remaining 5% are descendants of European immigrants. Paraguay is a bilingual country, where Spanish and Guaraní are spoken but the predominant language is Jopara, which is a fusion of Spanish and Guaraní.

Its economy is essentially dependent on agriculture (the world's fourth largest exporter of soybeans and oilseeds) and cattle (the sixth largest exporter in the world). With exports reaching the entire world, its economy has grown steadily over the last 10 years. This growth came with an unfair reality: 10% of the population owns nearly 90% of agricultural land, a situation which results in a marked social inequality and a notorious lack of opportunities for the rest of the population.

Despite all the growth of recent years, Paraguay is ranked among the poorest countries in the Americas, with more than 20% of its population below the poverty line. Lack of access to housing and public services such as health, education and food reflects this extreme poverty. Faced with this situation, TECHO Paraguay is mobilized to work with people living in informal settlements, where inequality and violation of rights is at its maximum. Their action is focused on community development, such as the construction of emergency housing. TECHO works with families in precarious situations on the construction of habitation units to respond to this urgent situation. This work is accompanied by a social approach that involves residents and young



© TECHO Paraguay

university volunteers in the process of building their community, encouraging participation, organization, identity and communication with other institutions to defend and claim their rights.

In this context, ARCHSharing, in collaboration with TECHO Paraguay, proposes the «Emergency Housing in Paraguay» contest.

TECHO

TECHO is a civil society organization active in Latin America and the Caribbean that seeks to overcome poverty in informal settlements through the joint action of its residents, young volunteers and other actors in society .

TECHO seeks to build a more equitable and poverty-free society with the implementation of a work model focused on community development, social awareness and communication with decision-makers and politicians.

TECHO has been in Paraguay since 2008 and works in 4 departments: Central, Caaguazú, Itapúa and Alto Paraná. To date, it has built more than 6,935 emergency homes, mobilizing more than 60,500 young volunteers across the country to work with 246 communities in informal settlements.

ARCHSHARING

ARCHsharing is a non-profit association founded in 2016 by two students from the Architecture school of Marseille (France). The association is dedicated to the organization of architectural competitions for students and young architects. Its aim is to promote pedagogy, to experiment with new ways of learning and new practices of the architectural project. The philosophy of the association is characterized by 3 distinct pedagogical actions:

- Transmission of the comments of the members of the jury to the participants. Thus, each project receives a professional comment as feedback.
- Creation of a book for the dissemination of participants' projects. This book also highlights the important ideas of the participants and allows a deepening of the subject with different articles.
- Access to construction through humanitarian projects. ARCHsharing gives the opportunity to the winners to build their project and to confront to the site.



© TECHO Paraguay

COMPETITION

In this context, ARCHsharing offers, in partnership with the humanitarian association TECHO Paraguay, the construction of a prototype emergency housing. The aim is to offer residents a building that responds to the emergency situation while guaranteeing their dignity and their right to a suitable home. This housing unit will have to adapt to different uses through ingenious and relevant architectural devices. Simplicity and efficiency should be the watchword, housing should be built in just a few days, with an inexperienced workforce. Particular attention should be paid to its modularity, its ability to expand according to the means, needs and possibilities. The proposals will have to take into account the particular context of Paraguay while keeping some freedom in the design of the building.

The laureate will have the chance to build his/her project with the humanitarian association TECHO Paraguay.

A prototype to set an example

The theme of the competition is the construction of an emergency housing for 5 people. The prototype will be built by TECHO after the competition. The winner will have the opportunity to go to Paraguay to collaborate on the construction. This prototype will enable TECHO to test its efficiency in order to develop it and build it in larger quantities to help families access quality housing.

Progressive housing

Housing will facilitate future expansions or additions. This house will be a response to urgent needs, but it may become a more generous home with time and resources of families.

Involvement of future inhabitants

The realization of the project must take into account the future occupants. Construction will be done in a process that includes families and residents. This initiative is part of TECHO's action to involve resident families and young university students in social action.

EXPECTATIONS

Innovative, Standing out, Aiming further

This is the number one criterion because it is the reason for this contest. TECHO Paraguay has joined this contest precisely to receive new ideas, to see projects that are different from what already exists, to find the right solutions granting a family a more efficient and better housing.

Modular and progressive growth capacity

The housing is a prototype that will have to be flexible and adaptable because it will be reproduced in different places. Therefore its modularity is an important point to facilitate the appropriation and the adaptation according to the needs of the family. It will be necessary to think of a system that



© TECHO Paraguay

facilitates its expansion, so that it is not a precarious transitional shelter, but a home that can become more spacious and comfortable over time.

Fast, Easy, Efficient construction

Fast, easy and efficient so that the project can be implemented in the shortest time and families can participate in the construction process. The housing unit must be buildable by 5 to 10 volunteers without specific technical knowledge in two days maximum. The construction time must be optimized and logistical difficulties removed. The assembly and the manufacturing process must be easy. The parts must be able to be transported in small trucks in order to be delivered to places that are not easily accessible.

Bio-climatic approach

A bio-climatic approach is expected to offer the family a pleasant atmosphere and sustainable housing. For a good thermal comfort, particular care will have to be devoted to thermal insulation, waterproofness and heating & ventilation system. Topics such as water harvesting, resource management will also need to be addressed.

The living cell

The accommodation must be 18 m² minimum, and must be composed of at least one module. The accommodation should be suitable for a family of 5 people. The cost will have to be minimized as much as possible. Currently TECHO is building its emergency housing between 800 and 1000 USD.

SITE

The prototype is intended to be installed in different informal neighborhoods in different communities, it is important that it can adapt to any type of terrain. That's why we do not provide a typical site. The flexibility of the building toward its land is an important element of the contest.

JURY

On November 21st a jury will be composed of architects will choose the 13 winning projects among your proposals. The jury members were selected based on their experience in the housing and humanitarian project. A preliminary jury will meet if the number of registrants is too high, so that each project is entitled to a real correction. The members of the jury have agreed to participate to the selection session held on November 21, 2018. However, their participation is subject to their professional constraints which may result in a change of the jury members.

JURY MEMBERS



AToT - ARQUITECTOS TODO TERRENO

Augustin MOSCATOT and Lucia HOLLMAN
ARGENTINA

AToT-Arquitectos All Terra is a collective of architects designing projects of different scales, public or private. Their work has been recognized on many occasions including the Latin American Biennale, where they were selected to represent Argentina. In parallel with their agency work, they teach at the school where they were trained (FADU-UBA, Argentina). Their public and private architecture is characterized by its elegance and attention to detail, whether in its materiality or its structure.



SEMILLAS PARA EL DESARROLLO SOSTENIBLE

Marta MACCAGLIA
PEROU/ITALIE

Semillas is an NGO composed by international and interdisciplinary team of professionals comprising architects and construction specialists. In short, they create and execute educational architecture projects with an emphasis on integrated development. They believe that education is the foundation for personal and community development, they deeply value collaboration in fostering collective development, and strive to establish equal rights and opportunities for the communities they serve. For them, architecture is not only a form of cultural expression, but also a powerful way to improve people's lives.



ARQUITECTO DANIEL MORENO FLORES

Daniel MORENO FLORES
EQUATEUR

D. M. Flores develops his architecture from five dominant themes that punctuate and animate his projects. Dream: dream of a world where everything is possible to create a unique architectural experience. Brighten up: invent the project with passion, like a game; this attitude towards the project will be felt in the final object. Share: sharing makes common goals and personal learning possible. Optimize: optimize time, material, activity, and money to improve the potential of the building, thanks to architectural efficiency. Learn: each exercise is an opportunity to test one's knowledge; starting from the dream, we can learn from solutions without preconception.



DX ARQUITECTOS

Germán Rodríguez Olivós
CHILLI

DX Arquitectos is a somewhat particular group. In addition to developing a conscious and coherent architecture, it acts as a professional support to companies in order to develop sustainable structures around their activities. Composed of a multidisciplinary team they follow and assist the project from its conception to its realization, in order to generate proposals that fully resolve the uniqueness of each project while remaining throughout the process in accordance with the environment.

JURY MEMBERS



DIRECTOR DE VIVIENDA & HABITAT TECHO INTERNACIONAL FERNANDO DUARTE CALLIZO PARAGUAY

Fernando Duarte Callizo a évolué chez TECHO en commençant en étant bénévole à TECHO Paraguay autour des communautés d'Asuncion. Petit à Petit il évolue à travers l'association, en se spécialisant dans la construction et la logistique, puis en 2013 il devient directeur social exécutif de TECHO Paraguay, trois ans plus tard il décide de se spécialise dans la question de l'habitat et devenant le directeur "logement et de l'habitat" au bureau de TECHO International. Depuis il oeuvre à la mise en place de stratégies, de solutions pour participer à l'amélioration des conditions d'habitation les pays d'Amérique latine et des Caraïbes où l'institution est présente.



ARCHSHARING

Sophie Ponthieu et Aubéry Revel de bretteville
FRANCE

Sophie and Aubéry are both architects and founding member of the ARCHsharing association. Thought not full-fledged jury members, they are closely following the project selection process. Emergency Housing in Paraguay is the third competition they organize. Their experience in the different phases of project selection allows them to manage the evaluation process and jury days. They propose methods and avenues of discussion to get the juries to select the winning projects in a fair way. They take notes of everything that is said at the jury, so as to provide as complete as possible a feedback to candidates. Prior to jury evaluation, they may deselect projects whose representation does not allow a good understanding of the proposal.



© YLUUX

THE PRIZE

FIRST PRIZE

THE CONSTRUCTION OF ITS EMERGENCY HOUSING PROTOTYPE !

1500 € + publication ARCHsharing
2 volumes of Archsharing publications : LWT - CCN

SECOND PRIZE

1000€ + publication ARCHsharing
2 volumes of Archsharing publications :
LWT - CCN

THIRD PRIZE

500€ + publication ARCHsharing
3 volumes of Archsharing publications :
LWT - CCN

10 HONORABLES MENTIONS

1 volume of Archsharing publications : LWT or CCN,

The sustainability of the project

The ease of implementation

The concept

The quality of living space

Architectural quality

The materiality

Technical innovation

The originality of the project

The flexibility of the project

Budget optimization



© YLUUX

ELIGIBILITY

Registration is open to all students of schools and universities in relation with architecture, and to young architects less than three years after graduation. Teams can be multidisciplinary (architect, engineer, landscaper, ...). An official proof will be asked during registration (student card, diploma, ...).

REGISTRATION

Special registration	60€
Normal registration	80€
Late registration	100€

CONSTRUCTION

ARCHsharing gives the opportunity to the winning project to be built with the humanitarian association TECHO Paraguay. The contract stipulates that TECHO commits to carry out the construction of the emergency housing prototype. ARCHsharing acts on the basis of good will and determination to see the project built but in no case can be held responsible if the construction can not be completed.

The laureate will be encouraged to go to Paraguay

to participate in the preliminary studies of the project and to get involved in the construction of his project. the rights of the project will be given to TECHO, which is required to mention the name of the winner on every document related to the project. The entry in the competition implies that the participant in the event that he is awarded the rights of his project to TECHO.

FEED-BACK AND COMMITEMENT

ARCHsharing is committed to sending each participant the comments from the jury members. After the competition, a book will be published with different articles on the topic of the competition and the most innovative projects received. This publication aims at sharing and spreading the ideas of students worldwide. An inspiration on a specific theme for architects of today and tomorrow.

INTELLECTUAL PROPERTY

Registering to the EHP competition implies transferring an unlimited right of use, distribution, publication and communication of all submitted material to ARCHsharing. Should any material be further used, distributed, published or communicated by ARCHsharing, the authors' names shall be mentioned.



© TECHO Paraguay

CALENDAR

Special registration	15/08/18 - 30/09/18	60€
Normal registration	01/10/18 - 15/10/18	80€
Late registration	16/10/18 - 30/10/18	100€
Deadline	03 november 2018	
Jury	21 november 2018	
Winners announcement	1 december 2018	
Publication	2019	
Construction	2019	



DOCUMENTS

Deliverables:

Participants will submit two types of documents. One panel, A1 size, (landscape or portrait), and one explanatory notice on 200 words, A4 size.

The A1 panel shall contain all graphical elements needed for a proper understanding of the project. Any kind of representation is accepted (plan, section, 3D, axonometry, models, ...).

Files must be JPG format and no bigger than 10 Mo. File names will follow this template: TEAMCODE_A1_EHP (example: ACS_A1_EHP).

Explanatory notice will be clear and concise, no longer than 200 words. Font shall be Arial 12. Notice name shall follow this template: TEAMCODE_A4_EHP (example: ACS_A4_EHP).

IMPORTANT:

- Layout must follow the template given during the registration.
- Documents shall be submitted in english on ARCHsharing website : www.arch-sharing.com
- Submission deadline is 03 November 2018 at 23:59 (UTC/GTM+2, Paris)

ACKNOWLEDGEMENTS

We would like to thank the jury members and our partners.

TECH

architecture
ensa•m
marseille

lis
avi

'A'A'

ArchPAPERS