

Landscape Observatory
Pamukkale



Landscape Observatory Pamukkale



It is true that architecture is a means of intimate connection with a person, because through the different atmospheres designed, we produce a great synergy between the human being and the space that surrounds him. But we can not forget that this architecture is therefore related to its implantation, with its immediate landscape, with its exterior visuals, with the environment, ecology, etc. In short, with its immediate nature. Therefore, if we truly want to make good architecture we can not play two different melodies, but join our thinking to play a great and unique symphony.

The project is linked to nature and its research and observation. Although it is a place where any intervention of these characteristics can be of great impact, the way of locating and dialoguing with the environment will be evaluated.

INTRODUCTION

Nature is powerful and some places are unique, unrepeatable, sometimes unreal and can be anywhere. The human being has as sole duty to take care of it with the utmost delicacy and respect, especially in this field: architecture.

Once again we wonder how we can intervene in a landscape as spectacular as this, where water, white color and texture make this "cotton castle" a unique enclave that almost looks like a movie from another planet.

Nature plays an important role in an architectural project, it is more than a base or a landscape to look at, it is the cornerstone on which we base all development, thought and materiality. Architecture is the way that humans have to transform a place, but this can not distract from the need to reflect what we must contribute to improve that space without provoking the opposite effect. Therefore, intervening in nature raises the need to propose solutions with the utmost delicacy and in harmony with their environment.





Pamukkale, Pamukkale Belediyesi,
Province Denizli
Country: Turkey
Latitude: 37°55'123"N
Length: 29° 07'26"E



SITUATION COTTON PALACE

Deriving from springs in a cliff almost 200 m high overlooking the plain of Cürüksu in south-west Turkey, calcite-laden waters have created an unreal landscape, made up of mineral forests, petrified waterfalls and a series of terraced basins given the name of Pamukkale (Cotton Palace). Located in the province of Denizli, this extraordinary landscape was a focus of interest for visitors to the nearby Hellenistic spa town of Hierapolis, founded by the Attalid kings of Pergamom at the end of the 2nd century B.C., at the site of an ancient cult. Its hot springs were also used for scouring and drying wool.

The combination of striking natural formations and the development of a complex system of canals, bringing the thermal water to nearby villages and fields, is exceptional. The springs are the source of a hydraulic system extending 70 km northwest to Alasehir and westwards along the valley of the Menderes River. Pamukkale forms an important backdrop to the original Greco-Roman town of Hierapolis and the cultural landscape which dominates the area.

It is proposed to intervene in this singular space, being the choice of the participant to be located where they prefer within this natural setting. Although the area of intervention will be free, reTH!NKING has proposed an area of general intervention that can be seen in the planimetry provided.

The enclave does not have physical barriers separating the area of action Of the rest, that is, it will be possible to define the limits of the intervention.

Upper left image:
Aerial view: Pamukkale, 2016. Google
earth

Lower right image: Pamukkale. AVV
Info: UNESCO

PROGRAM

The proposed program includes the following spaces:

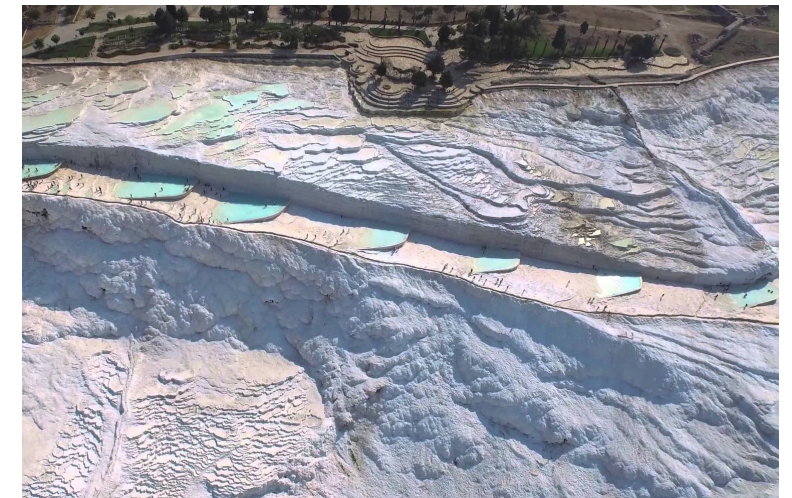
- Access
- Observation platform
- Work space
- Meeting and / or conference room
- Mirador's space
- Bathrooms

The project must be a unique place that produces its own identity in the area and turns the enclave into a landmark of environmental protection that proposes a need to take care of the existing environmental balance. The proposal must dialogue with the landscape and nature and that relates its visitors with this particular environment.

This program is orientative and can be modified by the contestant.

Project freedom is absolute and the area of intervention is free, this contest proposes that the participant investigate the forms of intervention in a singular landscape - Study limits, scales, views, access, materiality are the keys to follow.

*Being a contest on ideas, the participants are free to modify the given surfaces. This report must be taken as a reference for the necessary spaces so that the project is practical and as a measure for the total dimensions of the project. The participants can suggest new areas not included in this document, as deleting and combining some of the already mentioned.



reTHINKING philosophy

reTHINKING Team proposes contests far from the pessimism, with high doses of freshness and joy, restless and expansive. Definitely, it aims to stimulate and shake the architects heads who seem to be asleep and restore dignity to the profession. Being optimistic over all.

The proposed competitions will be focused on 8 concepts which we think there is much to investigate and propose by architects.

We understand that architecture can not be classified, as a single project reflects on various concepts relevant to contemporary culture, but enhance several of these main research topics.



"Changing response is evolution.
Change of question is revolution "

Top right image:
Pamukkale. AVV

lower left image:
Pamukkale. AVV

CONCEPTS



DENSITY



ECOLOGY



DETAIL



SCALE



LIMIT



MOBILITY



NATURE



HOUSING

MAIN CONCEPTS

NATURE



Definitely Nature does not exist. We have just digitalized the last squared meter of the planet and we have it already inside our artificial (artificializador) pocket.

Landscapes made to be used, where function and architecture show up at the same time their natural and artificial condition.

Architecture and context. Establishing both terms would be again a duality, some kind of halfway between architecture and its context, an inevitable addition of both of them due to its mutual influence. It becomes a singular ecology, among which architecture and what existed before are discovered. Architecture adds as a landscape, it is landscape and not object.

SCALE



Scale is no measure or dimension (unambiguous) but capacity of relationships (ambivalent). In the same way that dynamic systems that govern our universe (and complex geometries of structures associated with them) propitiate possible zoom relations ("to-scale" each other) (as recursive phenomena of increase and development) we are interested in those configurations (or provisions) open not ascribe to any scale or better, which alter the idea of scale of scale, not in size, as Federico Soriano would signal.

Action and effect of an architecture that does not distinguish boundaries, which is dissolved. All space of this architecture would be interspace = "between".

DETAIL



Detail refers to tiny, the contact of the body, perceptual and sensorial.

The space is not perceived by shapes and volumes, but effects that arise from actions that give value which is invisible for the eyes. These micro-actions are based on creativity generated by defining the minimum, the immaterial or the atmospheric.

The architecture must be thought from daily life, customs, lifestyle and way of moving.

Speaking of details means to talk about a consciousness of the space which is occupied by the body and its own action.

(VV.AA., Diccionario Metápolis de Arquitectura Avanzada, Barcelona: ACTAR, 2002)

(MVRDV, Farmax. Excursions on density, Rotterdam: OIO publishers, 1998)

DELIVERY CONTENT RULES OF PRESENTATION

Participants must submit a single A1 (59,4 x 84,1 cm) any orientation is accepted. The **registration code (order number, #0000 or #00000)** obtained at the time of registration must appear at the upper right corner. Remember checking the spam inbox. You must also choose a **Slogan** or title for your project which can be placed anywhere. Panels delivered without the code and slogan can be excluded from the competition.

THE SUBMISSION WILL BE ONLINE THROUGH RETHINKING WEBSITE: www.rethinkingcompetitions.com

Cuando se confirme el pago, el participante recibirá en el correo un archivo llamado "Welcome/Bienvenidos". En dicho archivo se especificará individualmente como deben nombrarse cada uno de los archivos y la forma de entrega de toda la información del concurso. **Revisar siempre el correo no deseado (Spam).**

Once confirmed the payment, the participant will receive a document named "Welcome/Bienvenidos". The way of naming each file will be explained here as well as how to submit your proposal. **Remember checking the spam box.**

Files must be zipped in only one .ZIP file with all the required documents. Files must be less than 8 MB.

The information included in the panels will be the necessary to understand the project, each participant can choose: graphic representations, model pictures, perspectives, sketches, renderings, texts, etc. Models can not be delivered.

The jury will evaluate the quality of architectural design and its clear presentation and general composition.

Shall not be required, although it will be appreciated, to solve the project construction or structural systems.

The project must be understood mainly through the artwork. In the sheet may be included text, although the presence of a large amount is not recommended. You can use either English or Spanish. The scale can be chosen by the participants.

REQUIRED DOCUMENTATION TO BE DELIVERED:

The following documentation is required:

- PANEL A1 IN .JPEG (118,9 x 84,1 cm):
- ABSTRACT (90 words) .doc.
- 1 TEAM FORM (21,0 x 29,7 cm) Team description. This file will be available by direct download in the document "Welcome / Bienvenidos".
- 1 TEAM PHOTOGRAPH (JPEG) in black and white.

This documentation will be named as described in the "Welcome-Welcome" file

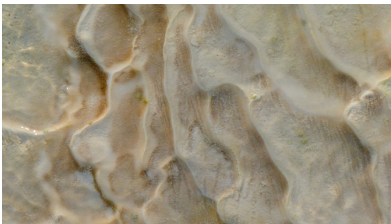
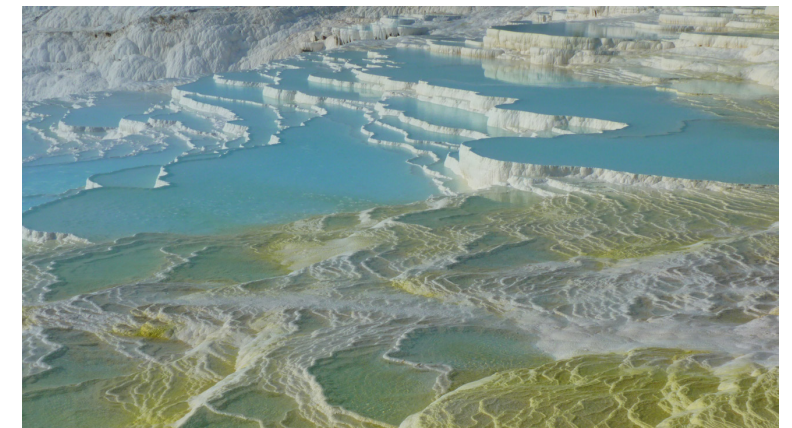


Imagen: texturas de Pamukkale. AAVV
Imagen inferior derecha
Pamukkale. AAVV



ELIGIBILITY

All students and architects or related professions anywhere in the world can participate in the contest. Participation can be individual or in groups, being eight (8) the maximum number of members. Team members can be from all disciplines (artists, philosophers, photographers, etc.), without being necessary, although advisable, the presence of an architect or architecture student. It is allowed that members are from different universities and countries.

The price of registration is the price that each participating team must pay, regardless of the number of members.

In case that one team or participant wants to submit more than one proposal for the same competition must register twice (or as many as want to present projects) paying the appropriate fee each time.

Under no circumstances should the participation of any juror, or anyone organizing professional agency relationship with any of the above will be accepted.

PRIZES

A prize will be awarded in the 1st phase of a total of 5,000 € distributed as follows:

First Prize	1.500 € + 2.000 € + 2000€ grant for Master's degree MArch Valencia
3 Accésits	3 x 500 €
+ 10 Honourable Mentions	No economic prize

The first prize will receive a scholarship of € 2000 for the Master International MArch program of the School of Architecture and Polytechnic of the European University of Valencia.

In addition the rethinking team is committed to the dissemination of the project through:

- Publication in magazines
- Publishing in blogs / architecture websites
- Publication in reTHINKING media

All the sponsors of the competition will be a key support in the development of the competition. The jury will be prestigious and will be composed of

professionals from the world of architecture.

*Depending on the country of residence of the winners, the cash prize may be subject to withholdings or tax payments under the law of the country itself.

JURY

Fran Silvestre Navarro (Fran Silvestre arquitectos)
Marta M Roy Torrecilla (KARTONKRAFT)
Tousidonis Anisi (Tousidonis Anisi arquitectos)
David Escudero (Researcher UC Berkeley, California)

*All jury members have shown a willingness to be present at the voting process where the winners will be selected, however their participation is subject to their professional and educative commitments with their own studies and projects.

El Jurado conocerá el Acta de Admisión Provisional de Propuestas emitida por el Secretario técnico, en este caso reTHINKING competitions y se pronunciará sobre las posibles incidencias que hayan podido producirse. A continuación examinarán las propuestas de forma anónima. El jurado se reserva el derecho de declarar desierto cualquiera de los premios. Igualmente podrá conceder "ex aequo" cualquiera de los mismos, repartiéndose en este caso la cuantía del premio a partes iguales.

CALENDARIO

15 de JUNIO 2017	Early registration starts
32 de JULIO 2017	Early registration ends
1 de AGOSTO 2017	Regular registration starts
21 de AGOSTO 2017	Regular registrations ends
22 de AGOSTO 2017	Late registration starts
4 de SEPTIEMBRE 2017	Late registration and FAQ ends
4 de SEPTIEMBRE 2017 20:00 h GMT + 1:00	Submission deadline
5-6 de SEPTIEMBRE 2017	Admission List publication in reTHINKING official website
4 de SEPTIEMBRE 2017 - 29 de SEPTIEMBRE 2017	Evaluation process
SEPTIEMBRE 2017	Winners announcements

* If the documentation is received after the deadline, the project will be disqualified.

** The website is www.rethinkingcompetitions.com. The list will be also published on Rethinking official facebook page (<https://www.facebook.com/reTHINKINGAC/>).

The results will be published in our website and Social media. It will also be communicated individually to each of the contestants or teams that have been awarded, which may be before or after their online publication.

INSCRIPTION

Inscription periods will depend on the competition publication and will be divided as follows:

Early	35 € + IVA
Regular	50 € + IVA
Advanced	70 € + IVA

IVA: 21%

Before making the inscription one member of the team must register on our website. After completing the registration form you will receive an email with your password and the registration code you will need for your panels (Order: #0000 or #00000). It's important to keep this registration code, it will allow your team to access the intranet where you'll be able to access your registration status, payment, and the upload form to submit your project.

Once registered you will have to make the inscription through our website: <http://rethinkingcompetitions.com/> by paying the current fee. The submitting instructions will be sent once we receive the payment.

After 5 days since payment reTHINKING will not make refunds. Refunds costs shall be paid by contestants and never by the platform. Inscription fees will not be kept for future competitions.

DISCOUNTS

It is possible to lower the price of the entries to any Rethinking competition registering multiple teams simultaneously. If you are a teacher and want to use our competition as an exercise you can take advantage of discounts and involve the largest number of teams. For every 10 teams will save 30% of the total enrollment.

* For the applicable discount teams should be registered at the same time. The payment will be the total of all the teams.

PAYMENT

The payment method will be the one that best suits the team, considering that payments made by Bank transfer must have as a concept the code team. If we receive a payment that is not properly identified we won't be able to relate it to your team and your participation will not be confirmed until you provide a proof of payment.

Bank Deposit the account data will be provided when choosing this option. Once the registration fee is paid it will not be refunded in any case. Registration dates are subject to the receipt of payments, not the time of issue.

Any type of management fees and / or bank charges will be borne by the participant.

Credit or Debit Cards: All card payments will be handled by PayPal to ensure data security. Rethinking not have access to your card details. The inscription will be received instantly.

DOCUMENTS

The following information is available for download on the website of reTHINKING:

Bases completas en ESPAÑOL
Complete rules in ENGLISH

Graphic Material
Site Photos
Site .dwg drawing

Communication Material
Competition's trailer
Poster

All the information is available for everyone in our website, no need for registration for consult it. Participants will create their own graphic documents or use materials from other sources, leaving the team Rethinking exempt from any liability for infringement of copyright or other intellectual property rights.

EVALUATION CRITERIA

The Rethinking team will provide to each jury member a document where the basic concepts which its own vision of the architecture is based on.

The jury, once understood the profile and concerns of RethinkING, will give their personal assessment based on their knowledge and experience on the architectural project.

The jury will be revising all deliveries, where finally, it was particularly valued the reTHINKING spirit and the adequacy of the response to the problem and achieved goals, reviewing the response that each project gives to each concept, methodology and research accomplished.

In this latest round finalists, honorable mentions and the winners will be designated.

The jury reserves the right to award proposals that do not comply any of the parameters of these rules as long as it represents an improvement in the project.

FAQ

From the start date until the deadline, all those questions that help to better understand the project and its objectives as well as on the functioning of competition may be proposed.

The questions not resolved in these rules or in the "FAQ" section of our website should be done through reTHINKING page on Facebook, which can be accessed from the top menu of any page our website. Any question must be sent to contact@rethinkingcompetitions.com

INTELLECTUAL PROPERTY

The authors of all the works presented have the rights recognized in the Real Decreto Real Decreto Legislativo 1/1996, of 12 April, approving the revised text of the Law on Intellectual Property, regularizing, clarifying and harmonizing intellectual property existing legislation on the subject. Once submitted, the material will be given to rethinking for future publications and promotions of the contest. If used for other purposes, the authors retain all rights to their proposals.

The information submitted may be edited by the reTHINKING team to adapt it for publications, but never altering the original project.

NOTES

reTHINKING reserves the right to make any changes in the competition rules (dates, deadlines, requirements, etc.) as long as these benefit the majority of participants and improving the competition. Any modification of the bases will be announced on the official website of reTHINKING on Facebook, remain the responsibility of the participants to visit frequently.

The project proposed here is fictitious and will not be built. The material provided to participants may have been modified by reTHINKING to improve the project conditions, so that drawings, photographs and other documentation may not match reality.

reTHINKING is only responsible for receiving, organization and evaluation of the contest, as well as assistance to participants in the development of competition, therefore, reTHINKING has no vote in regard to the decision of the winners that the jury deems appropriate.

The submission of the application for registration implies the acceptance of these rules.

Don't forget to follow us in our social networks to be up to date of all our news!

Subscribe to our NEWSLETTER !!!!



Con la colaboración especial de:



Colaboradores:



Con el apoyo de:



www.reTHINKing competitions.com
| +34 955 54 29 92 | +34 627 706 234 |
| contact@rethinkingcompetitions.com |
| calle josé laguillo 27 bloque 7 local 1B | Sevilla 41003

contact